

Willows Unified School District
Student Educational Field Trip Activity Request Form

(Complete and turn into Principal TWO WEEKS prior to scheduled activity)

Date(s) of Activity: April 25-27, 2018

Departure Time: 3:30am-4:00am

Termination Time: 9pm

Specific Destination(s): Santa Monica Mountains (Malibu, CA)

Purpose of Field Trip: Reward for winning the Grand Prize.

Number of Students: 22

Grade level(s)/Class: 5th Grade

School(s) Involved: Murdock Elementary School

Person in Charge: Mike Buckley

Phone #: 530-321-4400

Chaperones (including teachers): 3-4 adults

Provision for Meals: Meals would be supplied and paid for by Cal Water/NAAEE

Estimated cost other than district transportation (specific breakdown)

None

If district transportation for the field trip is required, complete a Vehicle Request Form and submit to the building principal with this form.

I understand that this field trip is part of the school's regular curriculum and that all school rules and district policies will be in effect during the entire trip.

Teacher's Signature _____ Date _____

Principal Approval S. Matena Date 3/29/18

Request for Board Item to be Placed on the Agenda for April

Mr. Buckley's class at Murdock Elementary is requesting permission for a 2 night overnight field trip to "NatureBridge" in the Santa Monica Mountains.

To learn about the program, educational experiences, a sample day and more visit:

<https://naturebridge.org/santa-monica-mountains/school-group>

The dates of this field trip are scheduled for April 25-27, 2018

Frequently Asked Questions

How will the students get there?

Either chartered bus or by air out of Sacramento Airport. They first were looking into chartered buses, but given the length of the ride they started looking into air travel. A decision on this has yet to be made.

Will there be chaperones and what would be the ratio of supervision?

Yes, we will have parent chaperones. We plan to take one chaperone per 8 students. Additionally, if there are students with special needs that require a parent or a caretaker, that, of course, is absolutely ok.

What about students who have health issues?

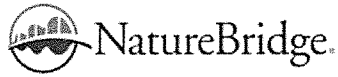
Working with our District nurse, we will be sure to address all allergies and any other medical issues in advance. Properly secured medications will be administered by an adult during the field trip and returned to parents after the field trip.

Will students need a permission slip?

Yes, all students must have a signed parent permission slip or they will not be able to attend.

What about students who can't go or choose not to go?

Students not attending will be placed in one of the other three fifth grade classes.



School & Group Environmental Science at Santa Monica Mountains

From the top of Sandstone Peak to the Anoyo-Sequit watershed, students explore the park's Mediterranean ecosystem and learn through academic



... nges how their world.

Learning in nature's classroom

Program Overview

Areas of Study

Lodging & Meals

Sample Day

Rates & Availability

Our Educators

Plan Your Program

The NatureBridge Store

NatureBridge environmental science programs in the Santa Monica Mountains National Recreation Area offer students in grades 4-12 the opportunity to learn hands-on science in one of the few Mediterranean biomes of the world. Our three- to five-day residential outdoor science programs are led by experienced educators and customized to enhance your school's curriculum.

- **A classroom like no other:** Only an hour away from the sights and sounds of Los Angeles, the Santa Monica Mountains National Recreation Area is the country's largest urban national park, home to over 1,000 plants, and 500 mammal, bird, reptile, and amphibian species.
- **Inquiry-based learning:** Born from the collision and sliding of tectonic plates, these mountains provide the opportunity to study some of the most unique and rare natural features and ecosystems in the United States.
- **Inspired to action:** Whether it be litter analysis, water quality testing, or compiling data for the Park Service, our goal is to translate passion for the environment into lifelong stewardship and conservation.

Request Information

Or inquire via phone:
Karen Oxrider
424-234-3240

Ask About Large Group Incentives for the 2018-2019 School Year

See why one school principal chooses NatureBridge programs.

NatureBridge in Southern California



NatureBridge in Southern California
501-I S. Reino Road,
#276
Newbury Park, CA
91320
818-914-7660

santamonicamountains@naturebridge.org

Directions
Directions to Circle X Ranch

(PDF 1 MB)

(PDF, 1 MB)

Directions to Camp Shalom

(PDF, 1 MB)

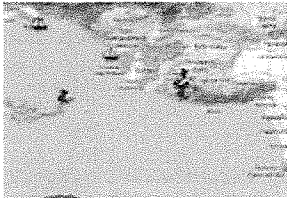
Directions to Camp Hess Kramer

(PDF, 1 MB)

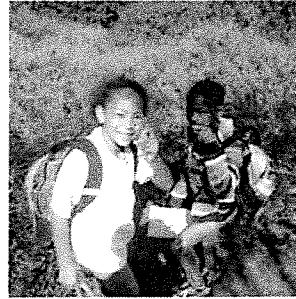
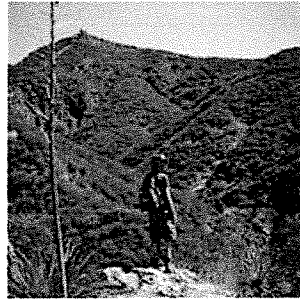
[View in Google Maps](#)

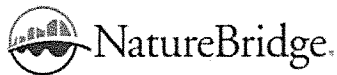
Bring your Class!

Send a request for more information or call Karen Oxrider at 424-234-3240 or koxrider@naturebridge.org.



A Proud Partner
of the National
Park Service





School & Group Environmental Science at Santa Monica Mountains

From the top of San Geronimo Peak to the Arroyo Secuit watershed, students explore the park's Mediterranean ecosystem and learn through academic and physical challenges how their actions impact the world.



Program Overview

Areas of Study

In our classroom, students have the unique opportunity to observe, experience, and personally connect to nature in the Santa Monica Mountains National Recreation Area. Our core academic emphases include:

- Life Science & Ecology
- Watershed Studies
- Earth Science & Geology
- Current Environmental Issues

Your program may focus on one or more of these areas of study, depending on your classroom's needs, location, and the length of your program.



Life Science & Ecology

Delve into ecosystems in the Santa Monica Mountains by discovering what organisms live in this Mediterranean climate and the adaptations they need to survive in this unique and challenging environment. Find the ways that organisms depend on and affect each other, and ultimately, see how everything is connected.

Watershed Studies



Request Information

Or inquire via phone:
Karen Oxrider
424-234-3240

Ask About Large Group Incentives for the 2018-2019 School Year

Areas of Study

Lodging & Meals

Sample Day

Rates & Availability

Our Educators

Plan Your Program

The NatureBridge Store

NatureBridge in Southern California
501-I S. Reino Road,
#276
Newbury Park, CA
91320
818-914-7660

santamonicamountains
@naturebridge.org

Directions

Directions to Circle X Ranch
(PDF 1 MB)

(PDF, 1 MB)

Directions to Camp
Shalom

(PDF, 1 MB)

Directions to Camp
Hess Kramer

(PDF, 1 MB)

View in Google Maps



Follow the Arroyo Sequit watershed from its start near Sandstone Peak to where it meets the ocean at Leo Carrillo State Park. Learn about watersheds and how humans impact them as water makes its way from the mountains to the ocean. Find out where our water comes from and how we can positively impact this vital resource



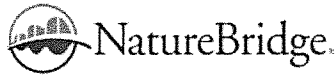
Earth Science & Geology

Discover how the Santa Monica Mountains were formed over geologic time while learning about plate tectonics, volcanoes, the rock cycle, erosion, and how humans may have an impact on some of these processes. Find out whether or not Sandstone Peak is truly made out of sandstone!



Current Environmental Issues

Climate change is a critical issue in our world, especially in our national parks. Learn about what climate change is, how it may affect the Santa Monica Mountains, and how actions at home can impact our natural world. Discuss some of the conservation issues that are ongoing today, such as marine protected areas, land management, and water rights.



School & Group Environmental Science at Santa Monica Mountains

From the top of Sandstone Peak to the Anoyo-Sequit watershed, students explore the park's Mediterranean ecosystem and learn through academic and physical challenges how their actions impact the world.



Areas of Study

Lodging & Meals

Sample Day

Rates & Availability

Our Educators

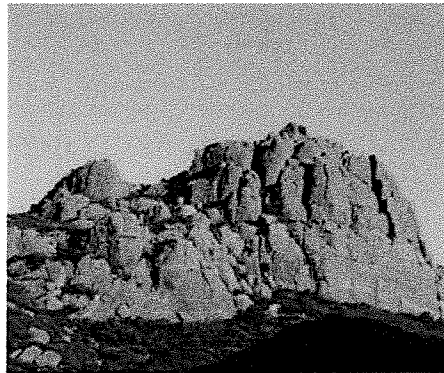
Plan Your Program

The NatureBridge Store

NatureBridge in Southern California
501-I S. Reino Road,
#276
Newbury Park, CA
91320
818-914-7660

santamonicamountains
@naturebridge.org

Directions
Directions to Circle X
Ranch
(PDF 1 MB)



Santa Monica Mountains National Recreation Area

Hidden in plain sight from Los Angeles, the Santa Monica Mountains National Recreation Area is home to one of five Mediterranean ecosystems in the world. With 26 distinct natural ecological communities, including freshwater habitats, coastal tidepools, chaparral, and oak woodlands, the Santa Monica Mountains provide the perfect setting for hands-on environmental science education.

NatureBridge offers two types of residential education programs in the Santa Monica Mountains.

Tent Camping at Circle X Ranch

Request Information

Or inquire via phone:
Karen Oxrider
424-234-3240

Ask About Large Group Incentives for the 2018-2019 School Year

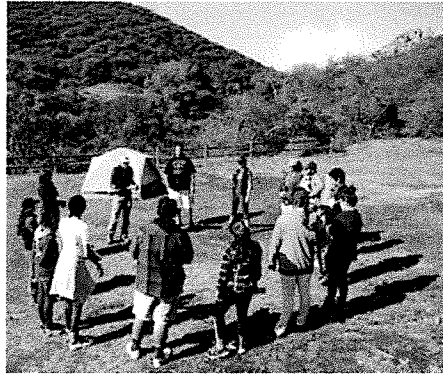
Directions to Camp
Shalom

(PDF, 1 MB)

Directions to Camp
Hess Kramer

(PDF, 1 MB)

[View in Google Maps](#)



Tucked into the canyons above Malibu, Circle X Ranch provides tent camping opportunities for groups up to 60 participants. While at Circle X Ranch, students will share tents (3-4 students per tent) while adult chaperones will have their own tents.

View Circle X Facilities

Dorm-Style Cabins



In partnership with two Malibu area summer camps, NatureBridge provides dorm-style cabin programs for up to 150 participants. Students sleep in bunk bed accommodations with their chaperones (12-15 participants per cabin).

View Camp Shalom Facilities

View Camp Hess Kramer Facilities

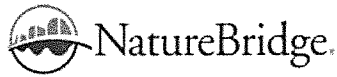
Combine your Santa Monica Mountains
Adventure with your Channel Islands
Adventure



Journey from the mountains to the sea when you combine hiking and learning in the Santa Monica Mountains National Recreation Area with a visit to the Channel Islands National Park and Marine Sanctuaries.



A Proud Partner
of the National
Park Service



School & Group Environmental Science at Santa Monica Mountains

From the top of San Gabriel Peak to the Avoye Sequit Watershed, students explore the park's Mediterranean ecosystem and learn through academic and physical challenges how their actions impact the world.



Program
Overview

Sample Day

Areas of Study

Lodging & Meals

Sample Day

Rates &
Availability

Our Educators

Plan Your
Program

The
NatureBridge
Store

NatureBridge in
Southern California
501-I S. Reino Road,
#276
Newbury Park, CA
91320
818-914-7660

santamonicamountains
@naturebridge.org

Directions

Directions to Circle X
Ranch

(PDF 1 MB)

A day with NatureBridge in the Santa Monica Mountains includes a wide array of activities to keep students engaged and connected to the natural world.

Below is a rough sketch of what a typical day might look like at either our Circle X Ranch or Camp Shalom program location:

7 a.m. Wake up

Students rise each morning either in tents at Circle X Ranch or their cabins at Camp Shalom and use this time to shower, dress, pack their backpacks for a day hike, and prepare for their day.

8 - 8:45 a.m. Breakfast

Just a few minutes away from the sleeping accommodations are the dining halls at Circle X Ranch and Camp Shalom. Meals served are healthy, filling, and kid-friendly.

8:45 - 9 a.m. Clean up and get ready to hike

Take this time to use the facilities and finish packing your day pack. Each trail group will take turns with morning stewardship and tidy up the dining hall before venturing out into the great outdoors for the day.

9 a.m. - 4 p.m. Instructional day

Request Information

Or inquire via
phone:
Karen Oxrider
424-234-3240

Ask About
Large
Group
Incentives
for the
2018-2019
School
Year

Directions to Camp Shalom

(PDF, 1 MB)

Directions to Camp Hess Kramer

(PDF, 1 MB)

[View in Google Maps](#)



During this time you will be with your hiking group of up to 15 students. The educators provide the activities and curriculum while chaperones assist in group management and with the behavioral needs of individual students. Lunch is distributed to the hiking groups and is typically eaten out on the trail. Depending on your school's social and academic needs, we will design a customized thematic teaching day aligned with the Common Core and Next Generation Science Standards. Students may find themselves:

- Hiking, collecting weather data, and learning about working collaboratively with others, leadership, and personal responsibility.
- Participating in a stream biomonitoring project while learning about watersheds and water use.
- Participating in litter analysis, which reveals many things about how humans affect the environment and learning how each of us can positively make a difference in the world through climate change activities, the Lorax debate, and reflection.

4 - 6 p.m. Recreation time

This is a time students can use to shower and change, write in their journals, play on the basketball court, or relax. A school may also use this time for structured learning activities. Teachers and chaperones supervise during recreation time.

6 - 7 p.m. Dinner

Dinners are nutritious, plentiful, and kid-friendly. Dinner time is also spent socializing and comparing stories with new friends.

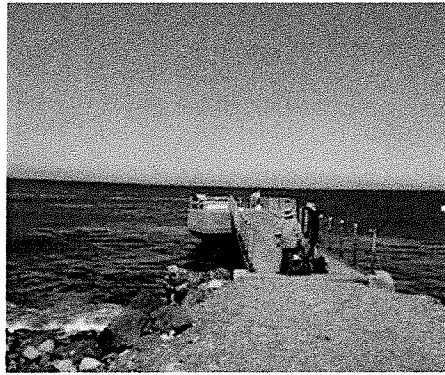
7:30 - 8:30 p.m. Evening program

Evening programs complement the material presented during your day. These large-group programs are engaging, educational, and inspiring. Activities may include astronomy, night hikes, and bobcat awareness.

8:30 - 9:30 p.m. Off to bed

This is the time for students to use bathrooms, change clothes, and brush their teeth. Teachers and chaperones supervise students during this time. Lights out is typically 10 p.m.

Santa Monica Mountains and Channel Islands



A Proud Partner
of the National
Park Service

A sample day schedule of a day trip to the Channel Islands is located [here](https://naturebridge.org/santa-monica-mountains/school-group/sample-day).